


A. NHS antibiotic prescribing research project


Existing data about us is matched, linked and compared to help GPs use antibiotics better



PEOPLE

Identifiable data, eg name, NHS number, gender, date of birth, postcode

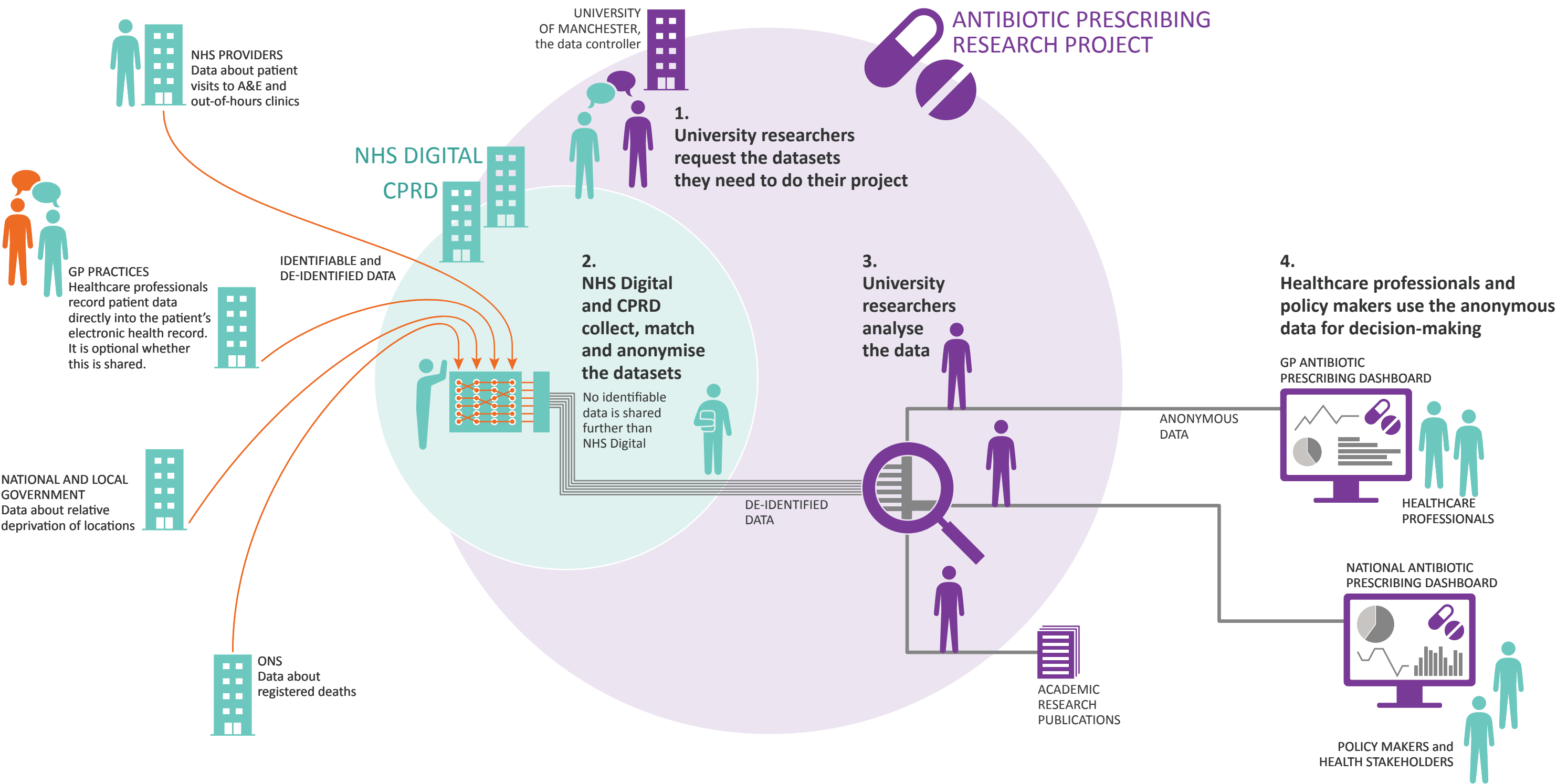
De-identified data, eg symptoms, referrals, prescriptions, cause of death



GOVERNMENT, PUBLIC SERVICE and NHS ORGANISATIONS and the PEOPLE who work for them, eg NHS Digital, the national provider of information, data and IT systems within health and social care in England, and Clinical Practice Research Datalink (CPRD), a research service supporting public health and clinical studies

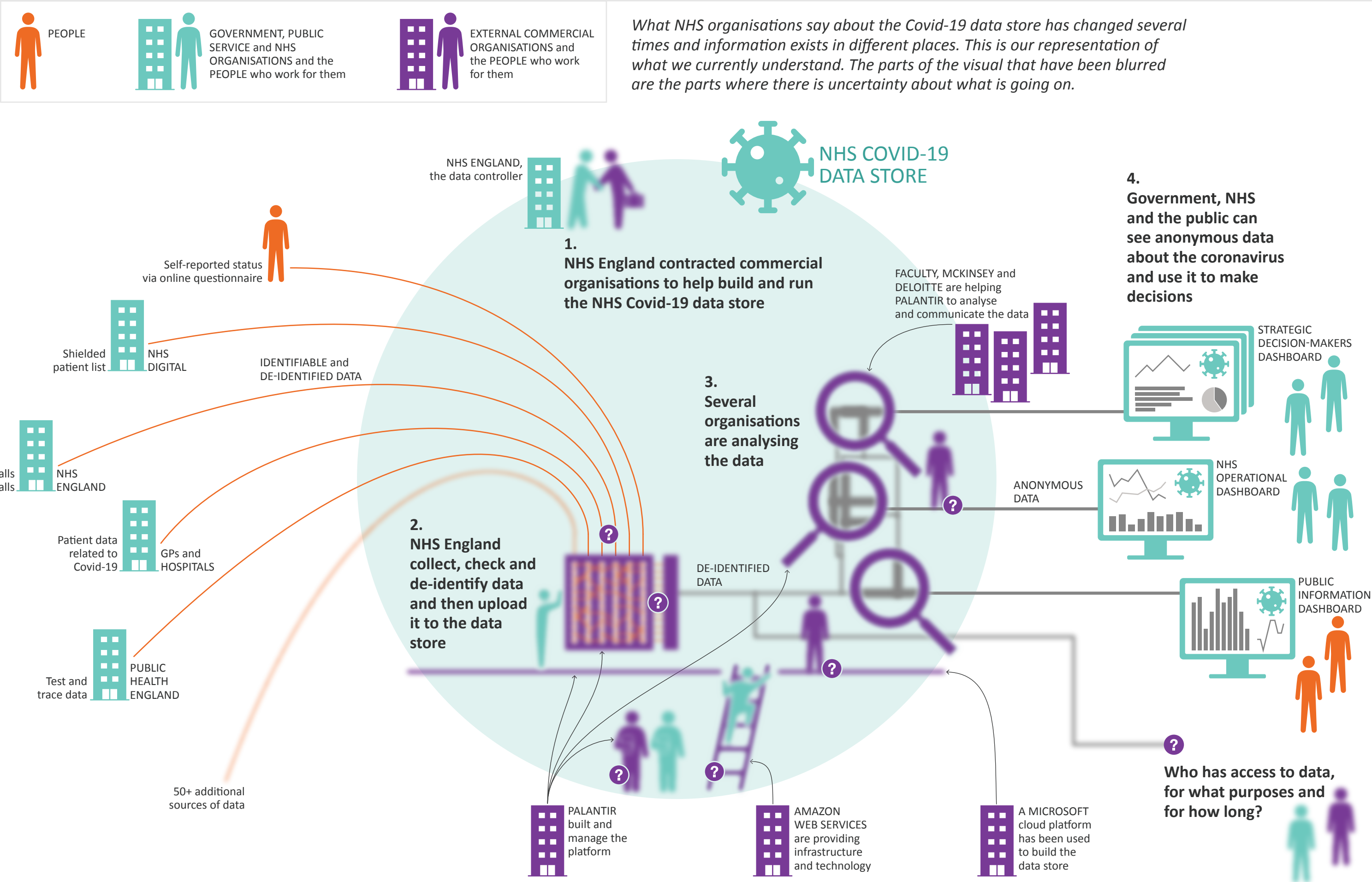


EXTERNAL ACADEMIC ORGANISATIONS and the PEOPLE who work for them



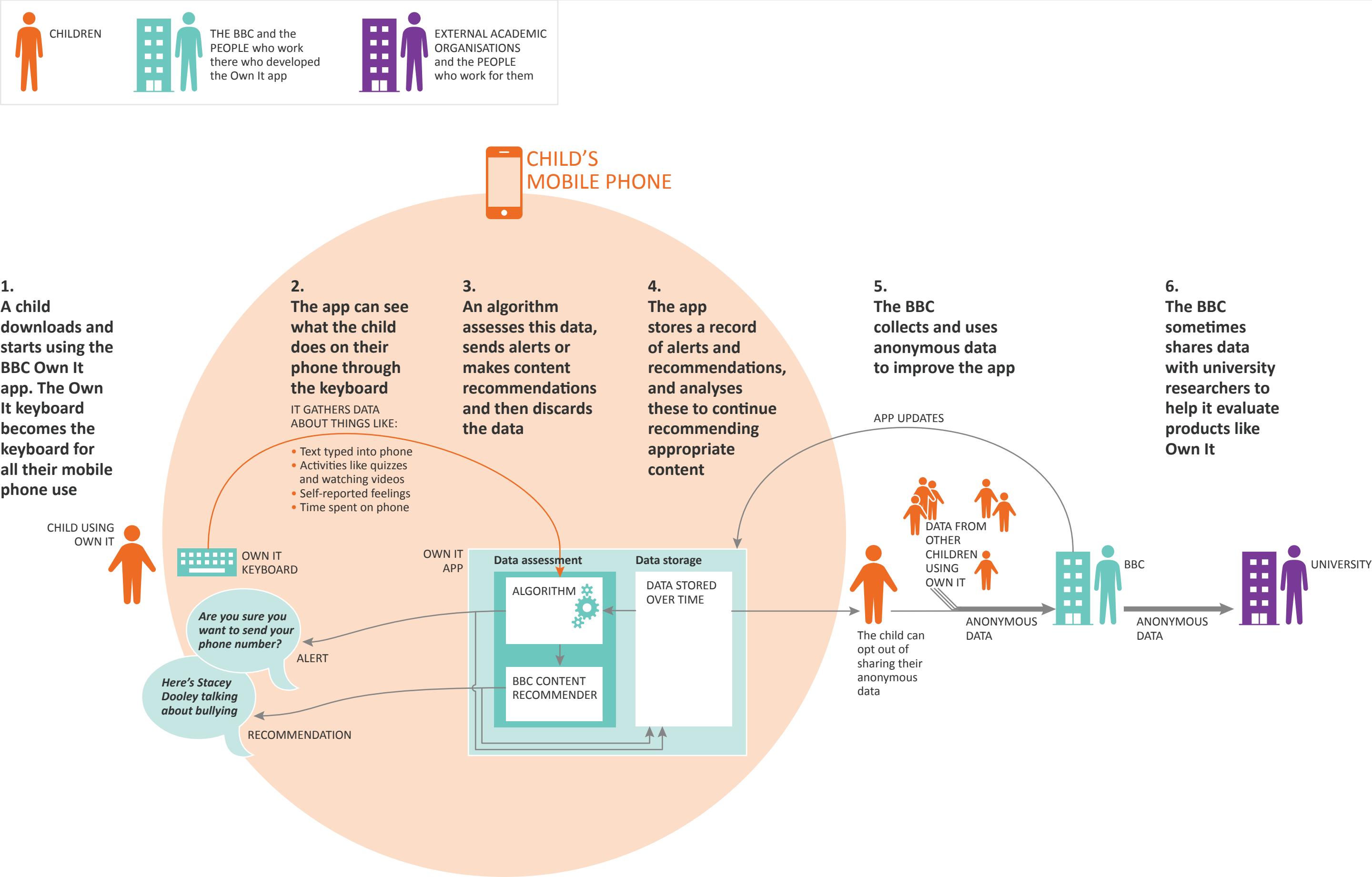
B. NHS Covid-19 data store

A national, secure data store to hold data in one place to help national organisations responsible for coordinating the Covid-19 response



C. BBC Own It app for children

Children receive real-time, well-being advice and content recommendations and no identifiable data leaves their phones



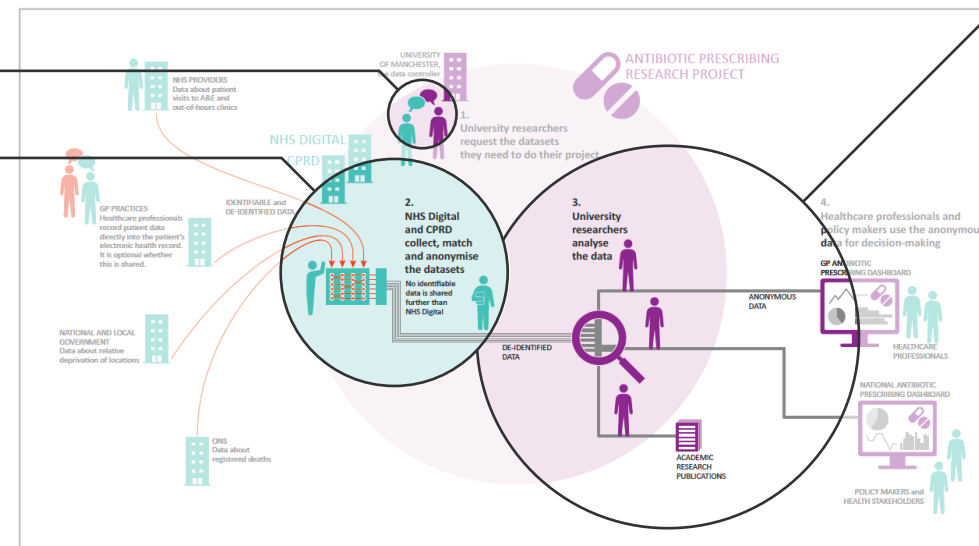
D. Data sharing & re-use

Where data collected by one organisation is then shared with another organisation

NHS antibiotic prescribing research project

Researchers request the data they need to do their project

DATA COLLECTION
Data is collected and de-identified by NHS Digital and CPRD

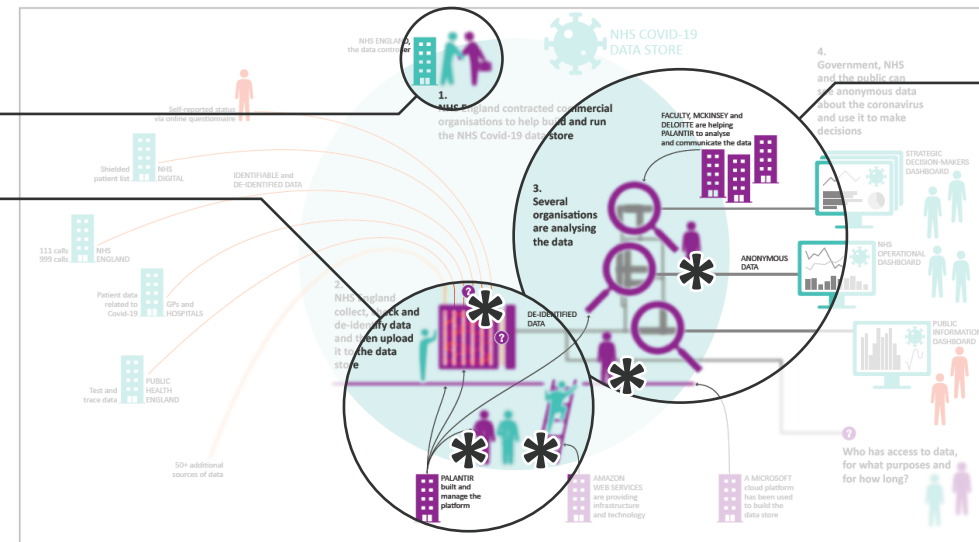


DATA RE-USE
De-identified data is re-used by university researchers

NHS Covid-19 data store

The NHS contracted commercial organisations to help build and run the NHS Covid-19 data store

DATA COLLECTION
The NHS collect, check and de-identify data and then upload it to the data store using tools and systems provided by commercial organisations*



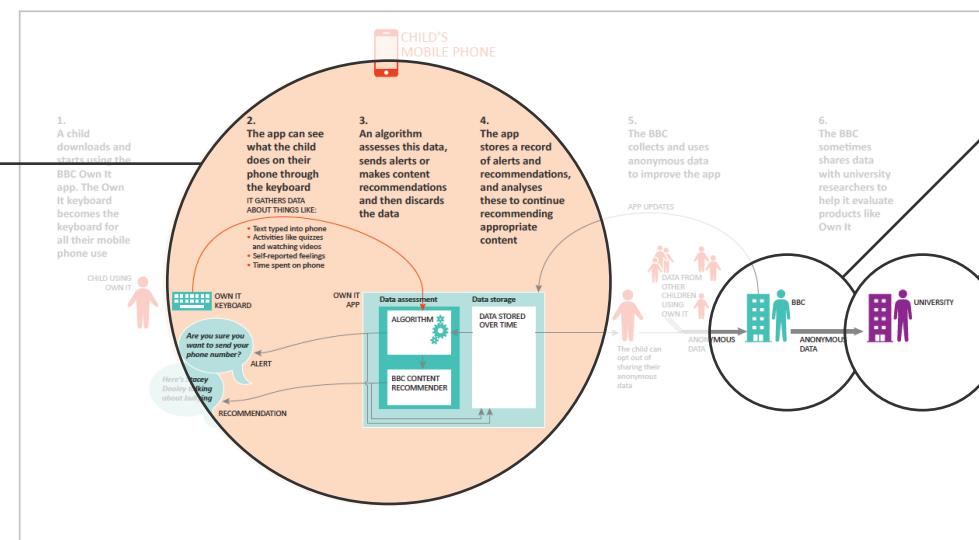
DATA RE-USE
Several commercial organisations* analyse the de-identified data

***BUT**
We don't know who has access to data, for what purposes and for how long

BBC Own It app for children

The child chooses to download and use the Own It app

DATA COLLECTION
Data is collected by the app and stays on the child's phone



DATA RE-USE
Anonymous data is re-used by the BBC to improve the app

DATA RE-USE
The BBC may share this anonymous data with university researchers in the future to help it evaluate products like Own It

